

1.0 Introduction

The CardioVu software requires a 64 bit Windows OS. This document shows how to install SQL Server 2012 Express database SP1 x64 for use with CardioVu software. The *TelemedSQLInstall.exe* will configure the settings properly in installing the SQL Server 2012 Express database on your computer.

Note:

The SQL Server Express Database should be installed before installing CardioVu software. Once SQL Server is successfully installed, run the “setup.exe” file for the CardioVu Software.

2.0 Requirements (Minimum)

- Supported OS : Windows 7 SP1, Windows 8
- Processor : Intel Core 2 Duo
- Processor Speed : 2.26 GHz
- Memory : 2GHz

3.0 SQL Server Installation

In this section are screenshots from the installation process on Windows 7 or Windows 8.

The CardioVu installation is a 2 step process. The database installation needs to be installed first under the DISK1 folder. After the SQL Server 2012 Express database is installed, then the CardioVu software needs to be installed, which is under the DISK2 folder.

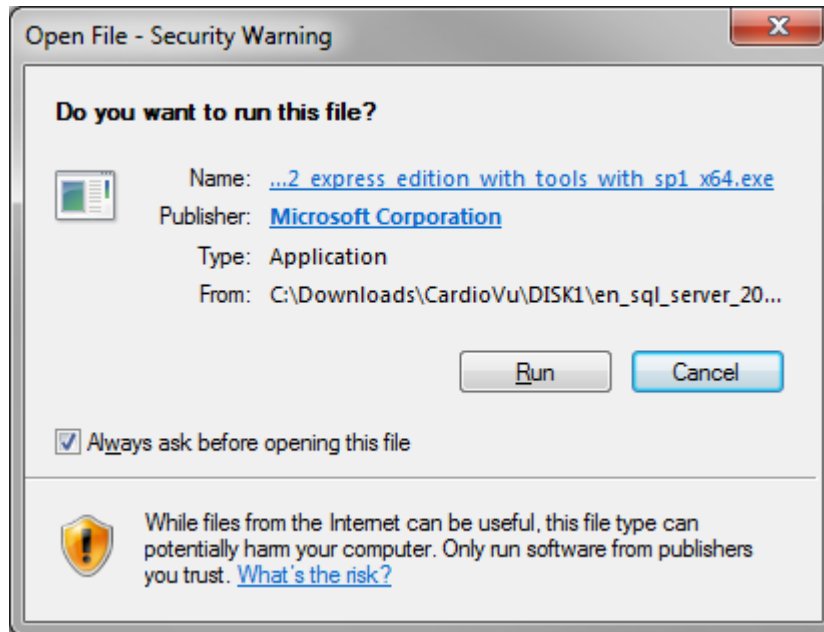
When you run the SQL Server installer, you may be prompted with different security warning screens depending on your Windows Security settings, and/or Virus protection software.

You may be prompted with “Open File – Security Warning” Dialog box a couple of times. Once when you initially start the installation program, and a second time when the program starts Microsoft’s database installer program. Click on the “Run” button when this screen appears.

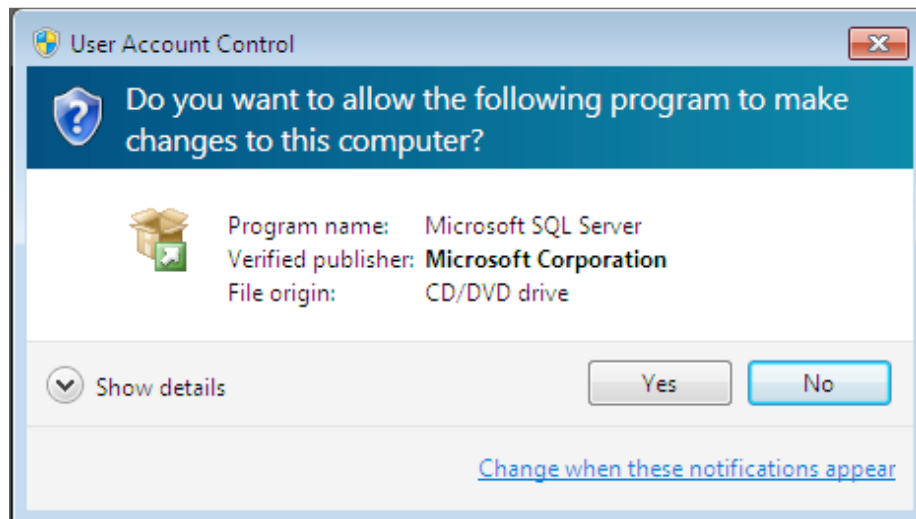
Run the SQL Server installer listed under \CardioVu\DISK1\TelemedSQLInstall.exe

6251 Schaefer Ave. Suite K
Chino, CA 91710
(909)628-8787

You may be prompted with “Open File – Security Warning” Dialog box. Click on the “Run” button.

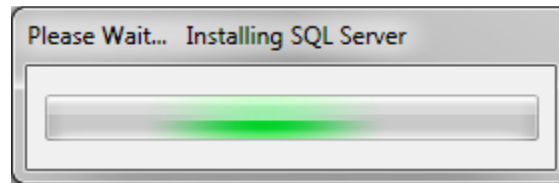


If you get the “User Account Control” screen below, click on the “Yes” button to continue the installation.

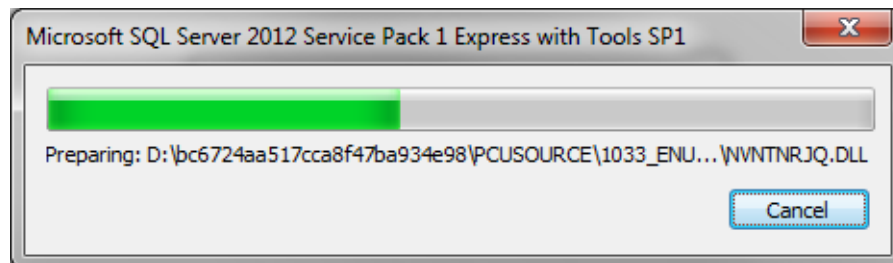


6251 Schaefer Ave. Suite K
Chino, CA 91710
(909)628-8787

The following dialog boxes below will appear during installation. These dialog boxes will not require any user intervention, but will display showing the progress of the database installation. Please wait while the files are extracted.

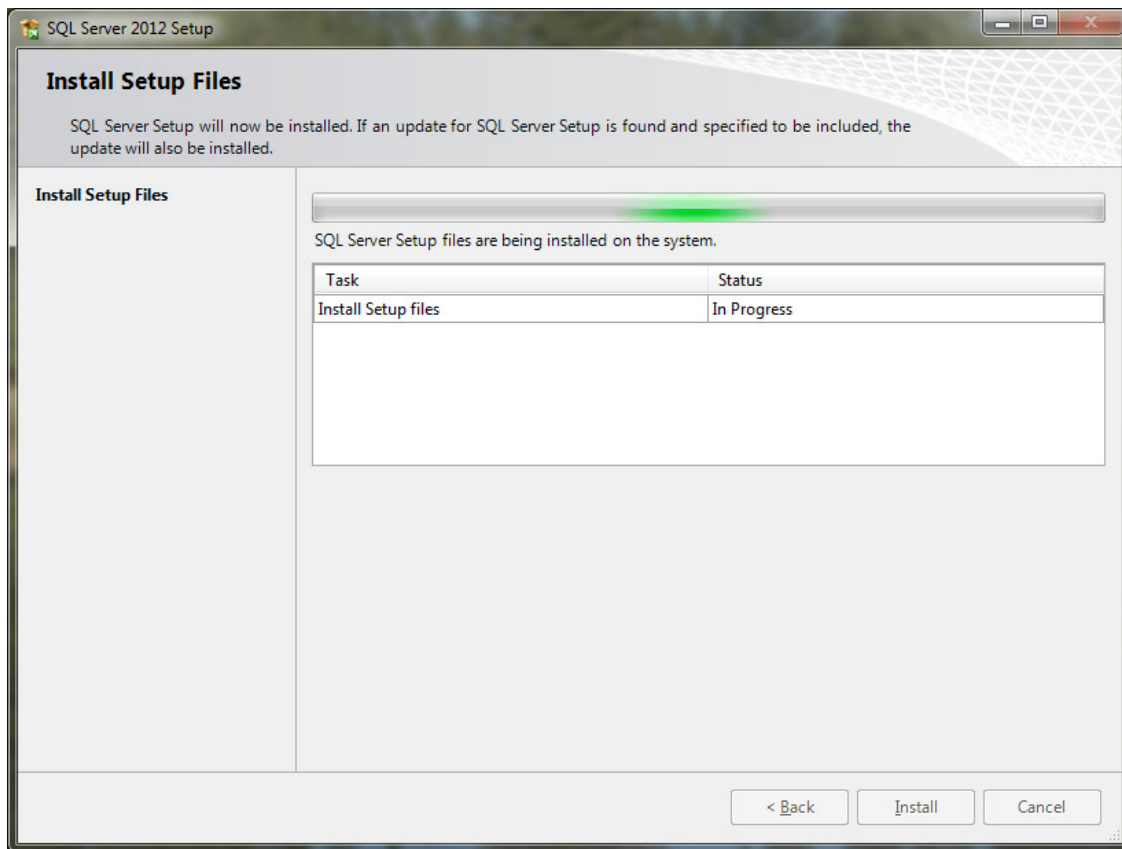


This dialog will appear if the Service Pack 1 needs to be installed.

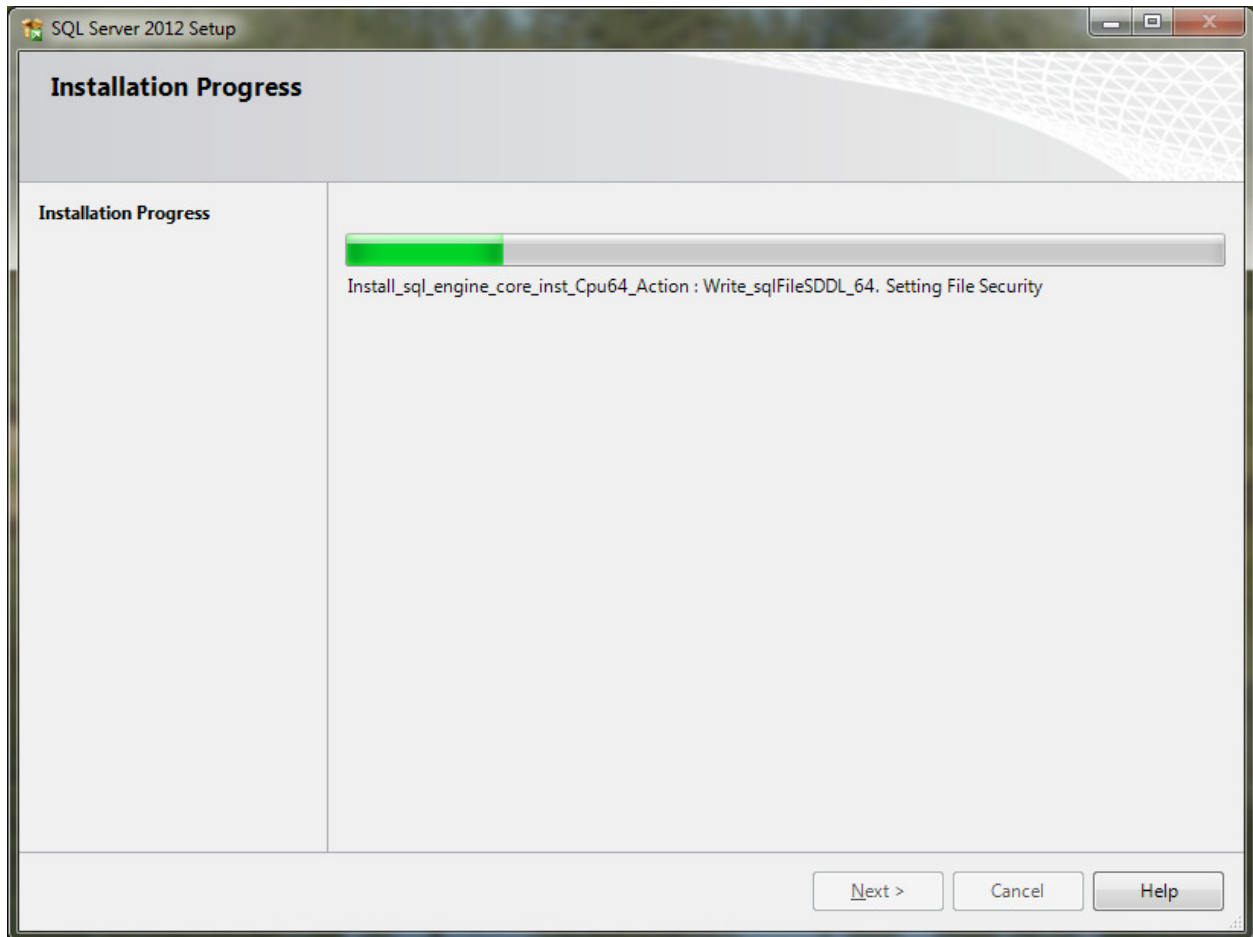


6251 Schaefer Ave. Suite K
Chino, CA 91710
(909)628-8787

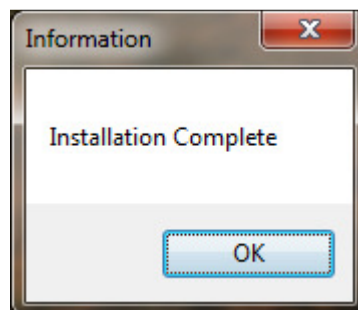
The Install Setup Files screen will show several steps of the database installation.



The Installation Progress screen will appear next.



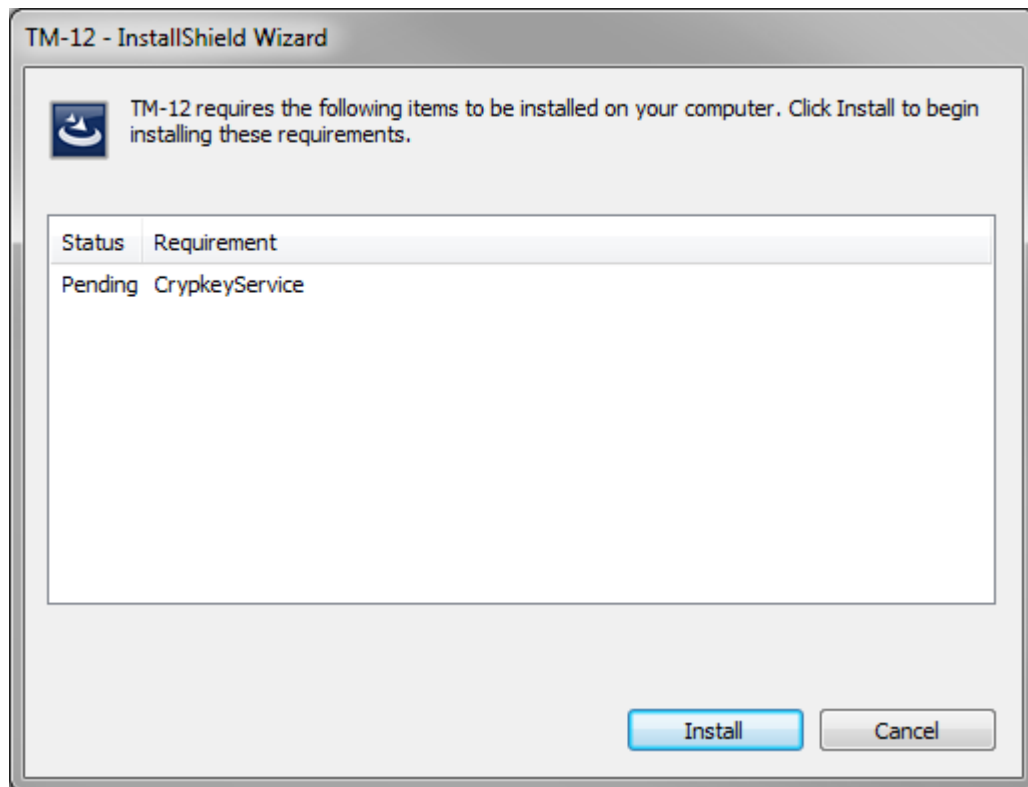
When the installation is successful, the dialog box below will display the message, "Installation Complete".



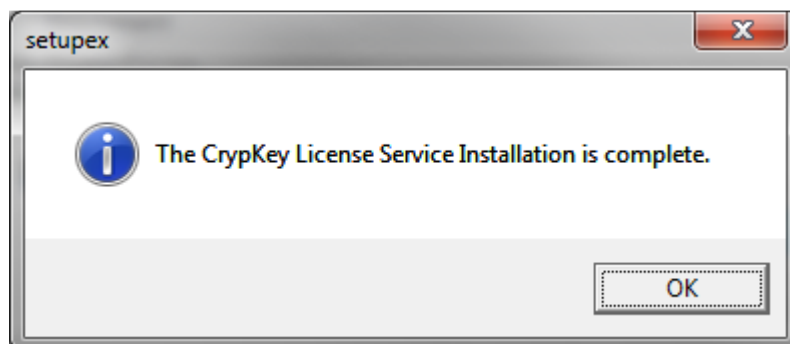
6251 Schaefer Ave. Suite K
Chino, CA 91710
(909)628-8787

After the database installation is complete, start the CardioVu software installation program.

Run the SQL Server installer listed under \CardioVu\DISK2\setup.exe



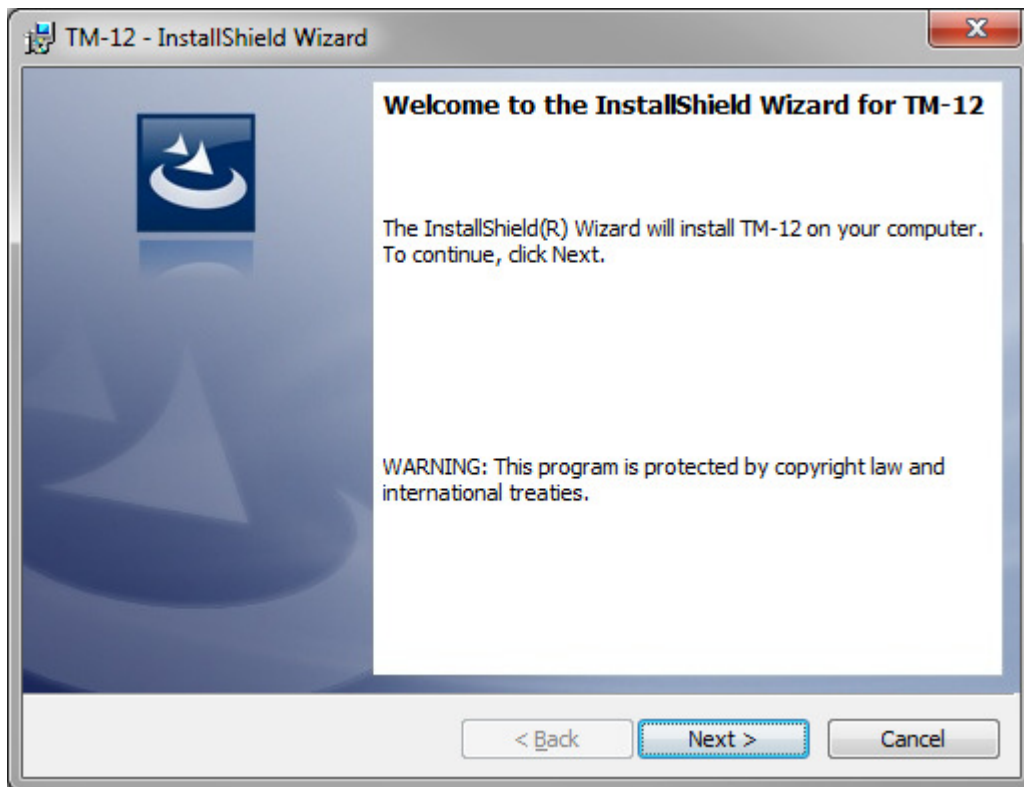
Click OK to finish the CrypKey installation.





6251 Schaefer Ave. Suite K
Chino, CA 91710
(909)628-8787

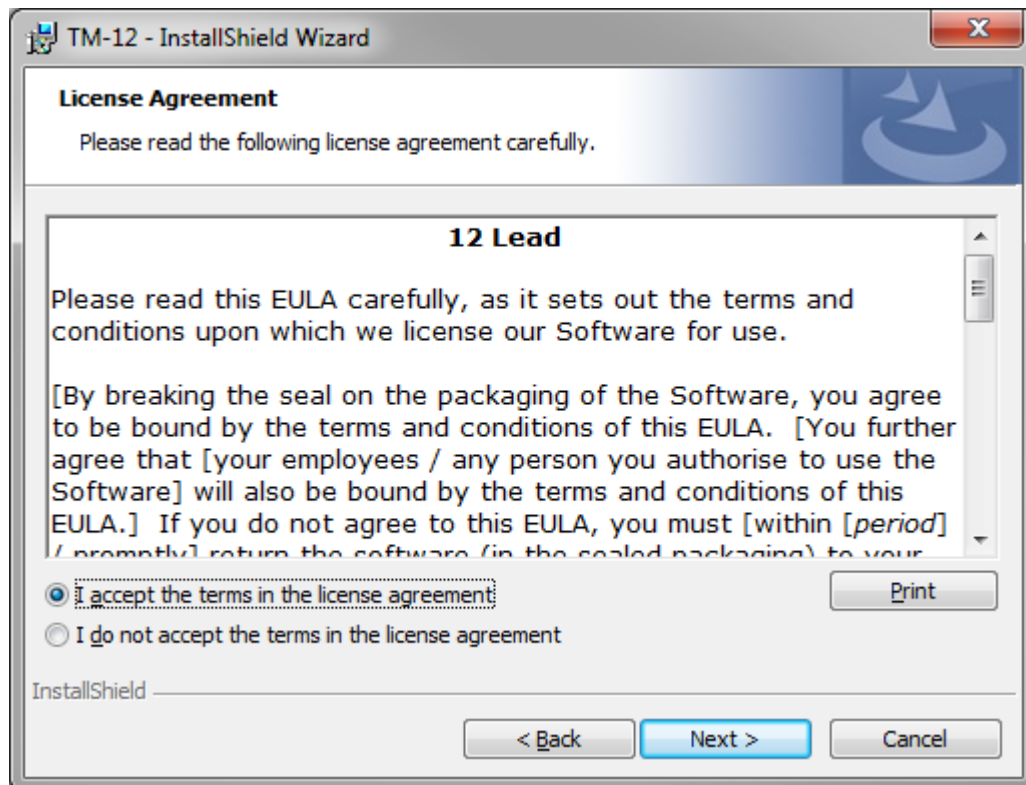
Click the "Next" button to start the InstallShield Wizard.



Click on the Radio button : I accept the terms in the license agreement.

6251 Schaefer Ave. Suite K
Chino, CA 91710
(909)628-8787

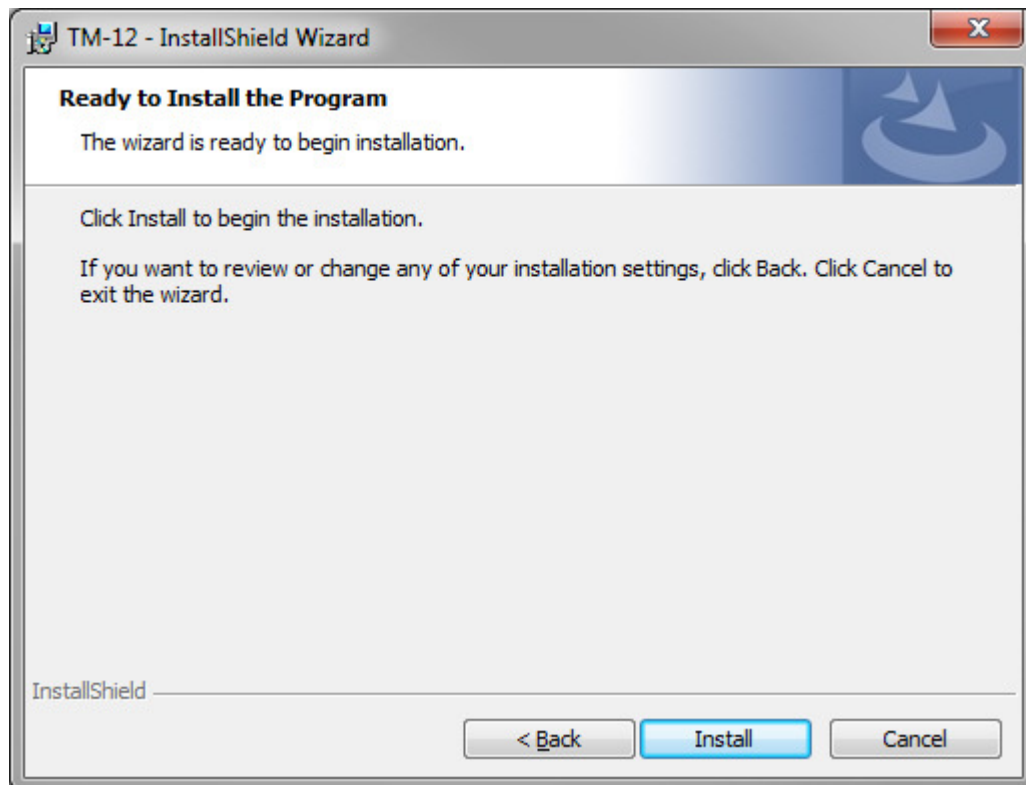
Then click on the “Next” button.





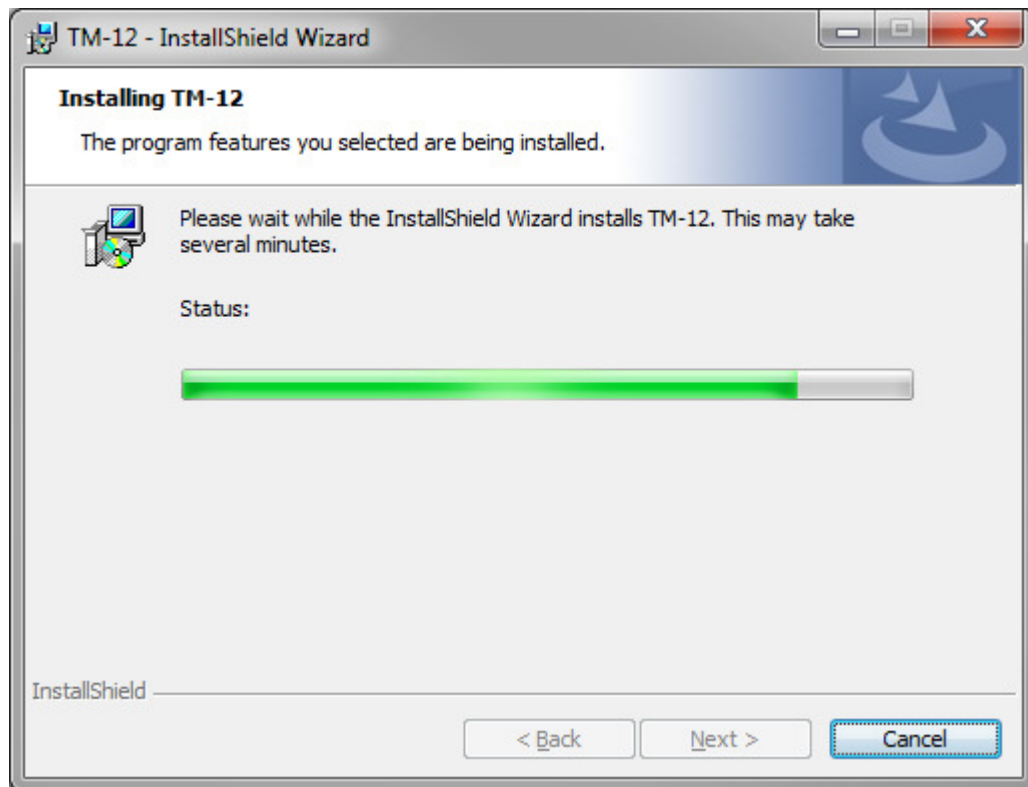
6251 Schaefer Ave. Suite K
Chino, CA 91710
(909)628-8787

Click on the "Install" button to start the CardioVu Software Installation.



6251 Schaefer Ave. Suite K
Chino, CA 91710
(909)628-8787

There may be a pause for several seconds before you see before you see the green bar under the Status bar.





6251 Schaefer Ave. Suite K
Chino, CA 91710
(909)628-8787

Click on the “Finish” button.

If you have any problems with the installation process, Click on the checkbox “Show the Windows Installer log” to save the installation log.

